



Jobs, Jobs, Jobs...

Community Economic Development
in the CSBG Network

The Partnership and CED

- Background
- Year One
- Agencies and Economic Development
- Year Two: The Plan
- Where Can YOU Help



COMMUNITY ECONOMIC DEVELOPMENT
A DIVISION OF THE COMMUNITY ACTION PARTNERSHIP – NATIONAL OFFICE

Background

2009 Community Action Partnership received a 3 – Year \$1.5 M Grant

Goals:

- Year One: Learn
Connect with the Agencies
- Year Two: Document Best Practices
Collaboration of Agencies and Experts in CED
- Year Three: Disseminate Information
Communicate: Teach via Webinars, How-to Guides, Tool kits,
Regional T/TA, Conference Sessions, Video Streams



COMMUNITY ECONOMIC DEVELOPMENT
A DIVISION OF THE COMMUNITY ACTION PARTNERSHIP – NATIONAL OFFICE

How Did We Connect?

- Surveyed the National Network
- Site Visits
- Conferences
- National Partners
(NASCSP, CCEDA, NAWB, OCS CED/JOLI, NACEDA)
- Social Media
(Twitter, Facebook, LinkedIn, Video)



COMMUNITY ECONOMIC DEVELOPMENT
A DIVISION OF THE COMMUNITY ACTION PARTNERSHIP – NATIONAL OFFICE

Year One

20% of agencies are involved in CED

What type of economic development projects?

What were the funding sources?

What were the project outcomes?



COMMUNITY ECONOMIC DEVELOPMENT
A DIVISION OF THE COMMUNITY ACTION PARTNERSHIP – NATIONAL OFFICE

Year One

70% are interested in CED Projects

How can we help?

What training will make ideas into a reality?

What are the challenges?

Not for Profit into For Profit?



COMMUNITY ECONOMIC DEVELOPMENT
A DIVISION OF THE COMMUNITY ACTION PARTNERSHIP – NATIONAL OFFICE

Agencies and CED

- Resort Owners
- Food Trucks
- Day Care or Event Catering
- Culinary School
- Agripreneurs
- Urban Gardens
- Transitional Housing for Youth
- Affordable Housing
- YouthBuild
- Entrepreneurial Coaching
- Microfinance/ Loan Funds
- IDA Programs
- Social Enterprise Collaboration
- Rural Health Network
- Dental Facilities
- Transportation Services
- Green Businesses
- Creating Green Jobs for the Disabled



COMMUNITY ECONOMIC DEVELOPMENT
A DIVISION OF THE COMMUNITY ACTION PARTNERSHIP – NATIONAL OFFICE

Framework for Best Practices

- Community Revitalization
- Entrepreneurship Encouragement
- Affordable Housing
(Development and/or Rehabilitation)
- Community Investment
- Community Wealth Building
- Job Creation Projects, Programs and Strategies
- Sustainability and Energy Efficiency
- Green Jobs



COMMUNITY ECONOMIC DEVELOPMENT
A DIVISION OF THE COMMUNITY ACTION PARTNERSHIP – NATIONAL OFFICE

2010 National Award

Best Practice Framework
2 Awards Per Category
Novice and Veteran Award

Honored at the
2010
Community Action Partnership
Annual Conference



COMMUNITY ECONOMIC DEVELOPMENT
A DIVISION OF THE COMMUNITY ACTION PARTNERSHIP – NATIONAL OFFICE

Community Revitalization

- Multi-purpose Building Construction
- Community Development Services
- Developing Senior Centers
- Building Ownership / Restoration
- Developing New Town Center
- Community Buildings
- Grocery Stores
- Theater and Art Galleries



COMMUNITY ECONOMIC DEVELOPMENT
A DIVISION OF THE COMMUNITY ACTION PARTNERSHIP – NATIONAL OFFICE



Community Revitalization Project

Three Rivers saw an opportunity to address the foreclosure crisis in Minnesota and create change in the community.

This effort combines sustainable building practices and public education.

- Past programs focused on fixing only the most urgent health and safety deficiencies and quickly re-selling the homes
- Three Rivers and its partners are dedicated to completely renovating these 60+ year old homes from top to bottom, inside and out.

By installing

- energy-efficient mechanical systems and energy-star fixtures/appliances
- innovative landscaping
- sustainable, non-toxic building materials,

Result:

- enhance the sustainability of older neighborhoods
- assist new homeowners
- raise public awareness
- through the Achieve Homeownership and Home Matters programs.

Avery Square

Chippewa – Luce Mackinac Community Action Agency



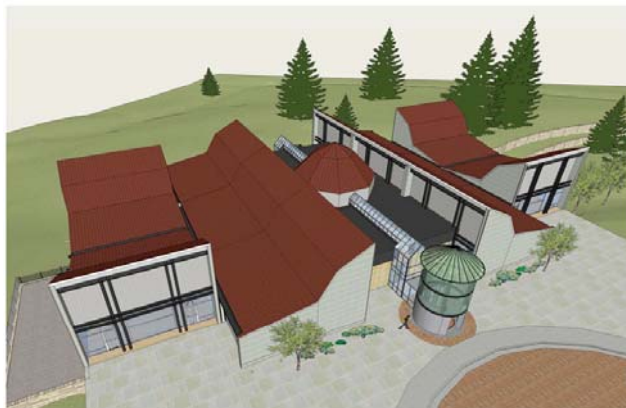
Deliberately placed this project in a declining business sector.

Renewal effort, Avery Square is a multi- purpose building covering half a block in the downtown area of Sault Ste Marie.



COMMUNITY ECONOMIC DEVELOPMENT
A DIVISION OF THE COMMUNITY ACTION PARTNERSHIP – NATIONAL OFFICE

Heartwood People Incorporated of Virginia



COMMUNITY ECONOMIC DEVELOPMENT
A DIVISION OF THE COMMUNITY ACTION PARTNERSHIP – NATIONAL OFFICE

Heartwood



- \$16,000,000 state-sponsored, asset-based development project
- Past experience provided opportunity to serve as a development partner
- Will provide financial benefits for years to come



COMMUNITY ECONOMIC DEVELOPMENT
A DIVISION OF THE COMMUNITY ACTION PARTNERSHIP – NATIONAL OFFICE

Entrepreneurship Encouragement

- Business Incubator
- Entrepreneurial Coaching
- Marketing
- Customer Service
- Business Plan Development
- Microfinance



COMMUNITY ECONOMIC DEVELOPMENT
A DIVISION OF THE COMMUNITY ACTION PARTNERSHIP – NATIONAL OFFICE



WHCA WASHINGTON HANCOCK
COMMUNITY AGENCY
Helping People, Changing Lives Since 1966

**Washington Hancock Community Action's Down East Business Alliance
has operated its signature Incubator Without Walls (IWW)
program since 1996**

IWW provides participants:

- business training
- technical assistance
- marketing
- business counseling
- grants and loans, and
- networking opportunities

IWW has served more than 400 businesses, helping them to create hundreds of jobs tailored to the rural business climate.

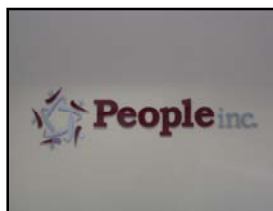
It also encourages peer networking that has long-term impact, as once-isolated business owners continue to learn from, assist, and encourage each other to succeed.

People Incorporated of Virginia

People Incorporated Financial Services, (PIFS) provides an assortment of small business financial and development services across western Virginia.

PIFS combines:

- Micro and small business loans
- Business Basics training
- Core Four classes
- Entrepreneurial coaching
- Workshops on
 - financial literacy
 - marketing and
 - customers to assist entrepreneurs to manage their businesses and -achieve self-sufficiency.



COMMUNITY ECONOMIC DEVELOPMENT
A DIVISION OF THE COMMUNITY ACTION PARTNERSHIP – NATIONAL OFFICE

Everything Goes Furniture

Financed by People Incorporated of Virginia



COMMUNITY ECONOMIC DEVELOPMENT
A DIVISION OF THE COMMUNITY ACTION PARTNERSHIP – NATIONAL OFFICE

People Incorporated of Virginia



COMMUNITY ECONOMIC DEVELOPMENT
A DIVISION OF THE COMMUNITY ACTION PARTNERSHIP – NATIONAL OFFICE

Squeaky's Pizza

Financed by People Incorporated of Virginia



COMMUNITY ECONOMIC DEVELOPMENT
A DIVISION OF THE COMMUNITY ACTION PARTNERSHIP – NATIONAL OFFICE

Sweet Konfections

Financed by People Incorporated of Virginia



COMMUNITY ECONOMIC DEVELOPMENT
A DIVISION OF THE COMMUNITY ACTION PARTNERSHIP – NATIONAL OFFICE

Affordable Housing

- Transitional Living Project for Youth
- Brownfield Property – Affordable Housing
- Drive out “Slum Lords” with Quality Affordable Housing
- Transition from Disaster to Affordable Housing



COMMUNITY ECONOMIC DEVELOPMENT
A DIVISION OF THE COMMUNITY ACTION PARTNERSHIP – NATIONAL OFFICE



Transitional Housing

Transitional living project for homeless youth in Columbia, Missouri.

Goal:

Provide safe shelter for homeless youth moving from the streets into permanent housing.

The energy efficient, sustainable facility will have

- 5 apartment units
- a common gathering area and
- separate rooms for support services.
- The project consists of not only the construction of the residence, but the programming and wrap-around services for the youth.



Transitional Housing

Youth Living in this facility are expected to:

- complete their education
- acquire life and job skills
- become employed
- participate in personal development and savings plans

The residents will pay a portion of their wages in rent part of which will go into an individual savings account to be used to acquire housing once their lease in this complex ends.

Barefoot Ridge



Over the course of 8 days in 2004, Hurricanes Francis and Ivan hit the rural mountains of Western North Carolina

- Already a critical need for housing
- 350 Homes destroyed

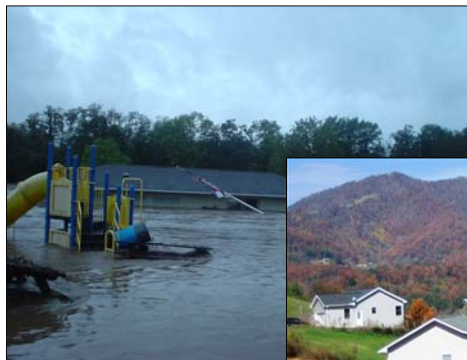


Results:
New Development: Barefoot Ridge



COMMUNITY ECONOMIC DEVELOPMENT
A DIVISION OF THE COMMUNITY ACTION PARTNERSHIP – NATIONAL OFFICE

Barefoot Ridge

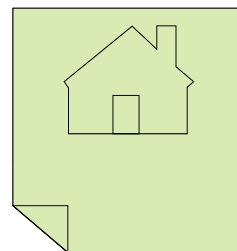


COMMUNITY ECONOMIC DEVELOPMENT
A DIVISION OF THE COMMUNITY ACTION PARTNERSHIP – NATIONAL OFFICE

Community Investment

Community assets or community opportunity structures that shape individual well being and quality of life.

- Farms / Nurseries
- Community Centers
- Office Buildings
- Commercial Rental Property
- Daycare Buildings
- Health care clinics



COMMUNITY ECONOMIC DEVELOPMENT
A DIVISION OF THE COMMUNITY ACTION PARTNERSHIP – NATIONAL OFFICE

Finch Farm Nursery



Santa Clara is a low-income rural community located outside the city of Cidra, Puerto Rico.

Challenges:

- 79% of the families were below the 75% ratio on the national poverty guidelines
- 86% of the residents were unemployed
- 14% had a job
- 33% of all adults didn't know how to read or write
- 50% of adults above 25 year of age didn't have a high school diploma



COMMUNITY ECONOMIC DEVELOPMENT
A DIVISION OF THE COMMUNITY ACTION PARTNERSHIP – NATIONAL OFFICE

Finch Farm Nursery



Socio-Economic Community Institute, (known as INSEC) partnered with the Santa Clara Community Board to create, "Finca Vivaro El Saban-ero, Inc.," the Finch Farm Nursery, Inc.

Results:

The farm is a community-based enterprise dedicated to cultivating herbs and vegetables.

- Use of wasteland
- Increased the availability of commercial facilities in the community
- Sustainable Jobs
- Community has greater access to fresh food



COMMUNITY ECONOMIC DEVELOPMENT
A DIVISION OF THE COMMUNITY ACTION PARTNERSHIP – NATIONAL OFFICE



Little Dixie Community Action Agency

Little Dixie Community Action partnered with two Community Health Centers
Southeast Oklahoma Rural Health Network (SORHN)
Developed to address limited access to health care

Achievements

- Providing public transportation for patients
- A "tele-health" system
- Increased access to dental and social work services

Results

- Since opening, the SORHN has doubled patient contact
- SORHN serves approximately 1,500 patients, more than 10 percent of the population in its service area.





Merced County Community Action Agency



- Own 12 properties
- 95% the funds are from state and federal grants



COMMUNITY ECONOMIC DEVELOPMENT
A DIVISION OF THE COMMUNITY ACTION PARTNERSHIP – NATIONAL OFFICE

Merced Community Action

How?

- Ownership of property is an allowable expense under most grants
- Expenses can be spread across the programs through an actual cost method determined by actual square footage of usage and mortgage payments



COMMUNITY ECONOMIC DEVELOPMENT
A DIVISION OF THE COMMUNITY ACTION PARTNERSHIP – NATIONAL OFFICE

Community Wealth Building

Business technical assistance programs/services and individual asset building initiatives.

- IDA
- Loan Fund
- First Mortgages
- Homebuyer Development Services



COMMUNITY ECONOMIC DEVELOPMENT
A DIVISION OF THE COMMUNITY ACTION PARTNERSHIP – NATIONAL OFFICE

North East South Dakota Community Action Program

NESDEC is one of the oldest Revolving Loan Funds in the nation

Mission

- stimulate economic opportunities and
- address problems of poverty and out-migration in the rural 30-county service area.

NESDEC provides

- Direct Business & Housing Loans
- Certificate of Deposit Pledges
- First Mortgages
- Business and Homebuyer Development Services

History

- Provided 1,500 loans to nearly 1,000 area businesses
- Assisted in creating or maintaining more than 8,000 jobs
- Directly financed loans totaling more than \$40 million
- With a collection rate of 97%



Green Jobs

- Fire your Clothes Dryer
- Urban Gardens
- Recycling
- Waste Management
- Deconstruction
- Shredding Operations



COMMUNITY ECONOMIC DEVELOPMENT
A DIVISION OF THE COMMUNITY ACTION PARTNERSHIP – NATIONAL OFFICE



Green Hills Community Action Agency

Green Hills Community Action Agency's Energy Services Department, utilizing funding from ARRA, has founded four, new, green projects:

- Energy Usage Assessments
- Fire Your Clothes Dryer
- Put a Little Green in Your Life
- Community Gardens

These projects focus on living a more sustainable life and have

- created 21 new jobs
- provided hundreds of people tangible benefits such as garden seeds
- gardening education
- individualized energy counseling
- educated school children about how to recycle, garden, save energy, and live green

The communities have experienced increased property values.

- **Vacant lots that were grown up in weeds are now vegetable gardens that are growing healthy, local food.**

Out of the Box Ideas?



- Social Collaboration (3 Agencies)
- Green Jobs for Disabled
- Resort Property
- Café : Teach at Risk Youth



COMMUNITY ECONOMIC DEVELOPMENT
A DIVISION OF THE COMMUNITY ACTION PARTNERSHIP – NATIONAL OFFICE

Social Collaboration



- Westmoreland Community Action
- Community Action Southwest
- Fayette County Community Action Agency

Collaboration Formed a CDC:
**Southwestern Pennsylvania
Community Development Corporation**



COMMUNITY ECONOMIC DEVELOPMENT
A DIVISION OF THE COMMUNITY ACTION PARTNERSHIP – NATIONAL OFFICE

Three Agency Collaboration

Results:

- 3 Community Action Agencies
- \$60 million annual budgets
- \$50 million Economic Development
- Heavily involved in development

	Westmoreland	Fayette	Washington	Greene
Population	362,000	144,000	206,000	40,000
Poverty Rate	10.0%	21.8%	9.9%	17.1%
Families	8.3%	20.2%	7.1%	13.5%
Single Mothers	48.2%	63.2%	43.6%	36.5%
Unemployment	8.0%	9.7%	7.8%	7.5%



COMMUNITY ECONOMIC DEVELOPMENT
A DIVISION OF THE COMMUNITY ACTION PARTNERSHIP – NATIONAL OFFICE



Social Enterprise Collaboration CDC IMPACT



SHOP DEMO DEPOT

Saving you \$\$\$ by Reclaiming and Reusing

A nonprofit organization created to:

- Help reduce waste of natural resources through the re-use of building materials.
- Act as a clearing house for donated and salvaged materials
- Waste is converted into charitable dollars used to support the three Community Action Agencies



COMMUNITY ECONOMIC DEVELOPMENT
A DIVISION OF THE COMMUNITY ACTION PARTNERSHIP – NATIONAL OFFICE

Shop Demo Depot Deconstruction VS Demolition REUSE!



COMMUNITY ECONOMIC DEVELOPMENT
A DIVISION OF THE COMMUNITY ACTION PARTNERSHIP – NATIONAL OFFICE

DocSolutions

- DocSolutions, L.L.C. is a social enterprise venture undertaken by Community Action Southwest, a non-profit social services agency in Washington County, Washington PA.
- This start-up business is a document scanning, retrieval and destruction company which will cater to local businesses, non-profit and government agencies.



COMMUNITY ECONOMIC DEVELOPMENT
A DIVISION OF THE COMMUNITY ACTION PARTNERSHIP – NATIONAL OFFICE



Arthur & Friends

Greenhouse Project provides training-for-employment opportunities to disabled and disadvantaged residents in Sussex County in the [green-collared industry](#)

Friends participate in a four tier training program designed to teach them how to plant, care for, harvest and sell hydroponically grown produce.

They will gain the necessary skills needed for employment in:

- agriculture
- management
- sales

After completion of the program, Friends will work with staff to find unsubsidized and meaningful employment.

- Training
- Computer Literacy Training
- Job Readiness Skills

Requirements Services designed to assist Sussex County residents, age 18 and over, that has a disability or is disadvantaged.

Garrett County Community Action

BUILDING STRONG COMMUNITY, EMPOWERING INDIVIDUALS

Adventure Sports Center International
McHenry, Maryland



COMMUNITY ECONOMIC DEVELOPMENT
A DIVISION OF THE COMMUNITY ACTION PARTNERSHIP – NATIONAL OFFICE

Year Two: The Plan

- Develop an Interactive CED Website
- Video Case Study
- Webinars
- Regional Training
- Conference Sessions

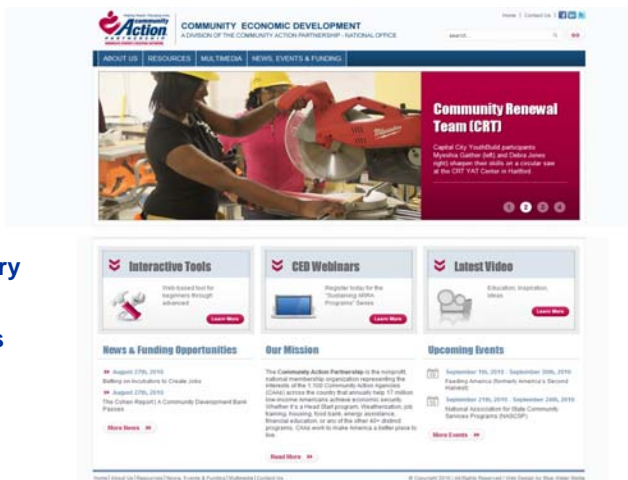


COMMUNITY ECONOMIC DEVELOPMENT
A DIVISION OF THE COMMUNITY ACTION PARTNERSHIP – NATIONAL OFFICE

New Website – Phase I

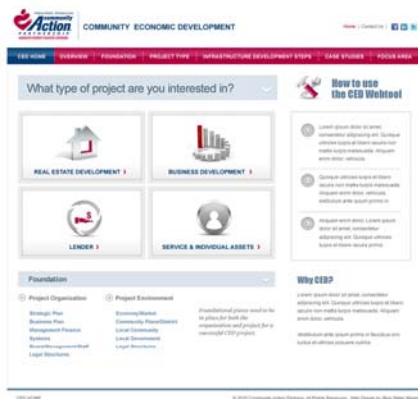
Launched
Sept 20, 2010

Includes:
Resources
CED Dictionary
Funding Opportunities
CED News
CED Events



COMMUNITY ECONOMIC DEVELOPMENT
A DIVISION OF THE COMMUNITY ACTION PARTNERSHIP – NATIONAL OFFICE

Website Phase II

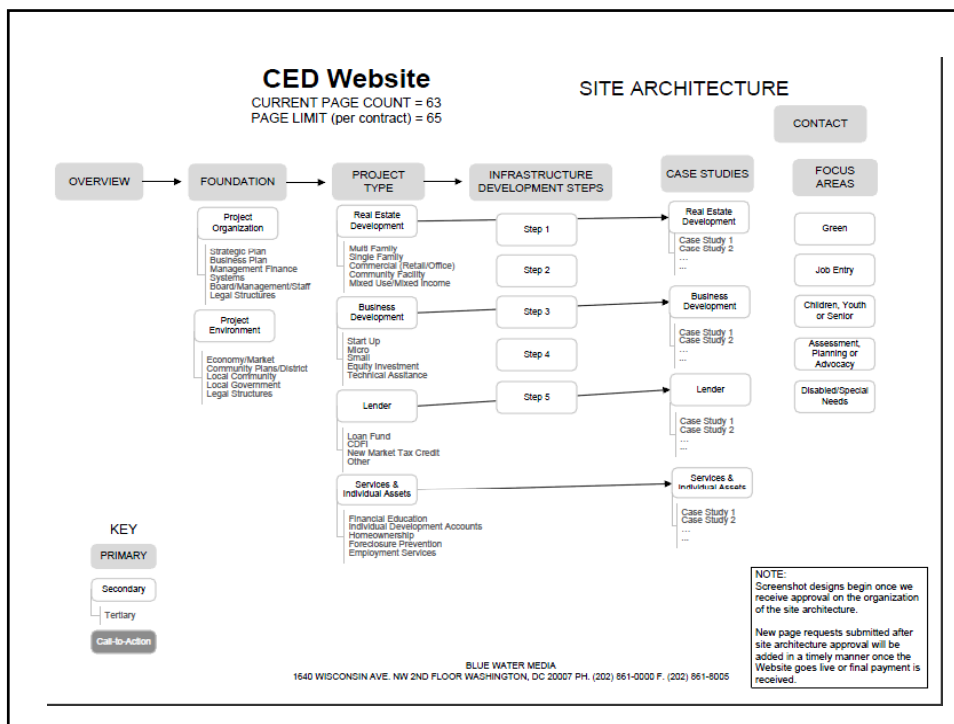


Interactive
Educational Guide
For CED

Beginner and
Advanced Levels



COMMUNITY ECONOMIC DEVELOPMENT
A DIVISION OF THE COMMUNITY ACTION PARTNERSHIP – NATIONAL OFFICE



Joint Ventures

“Sustaining ARRA Programs”

Free Webinar Series Hosted by:

**Community Action Partnership
Community Economic Development project
and
California/Nevada Community Action Partnership**

- Mission Driven Earned Income – September 28, 2010
- The Development Plan – October 14, 2010
- Building a Fundraising Board – November 17, 2010
- Sustainability Toolkit – December 8, 2010

To register go to:
www.partnershipced.org



Community Action
ARRA at WORK

State Assistance for CED

- Training for the Jobs Created
- Entrepreneurship Training
 - Agency T/TA
 - Potential Micro Businesses
- Revolving Loan Capitalization
- Market Analysis
- Business Plans
- Pre-development Costs
- Partner with The Partnership- National Office for Webinars, Training, Regional Meetings or Consulting Services



COMMUNITY ECONOMIC DEVELOPMENT
A DIVISION OF THE COMMUNITY ACTION PARTNERSHIP – NATIONAL OFFICE

Questions?

Stacy Flowers
Director of Community Economic Development

sflowers@communityactionpartnership.com

202-449-9784



CAP_CED



Partnership_CED



COMMUNITY ECONOMIC DEVELOPMENT
A DIVISION OF THE COMMUNITY ACTION PARTNERSHIP – NATIONAL OFFICE